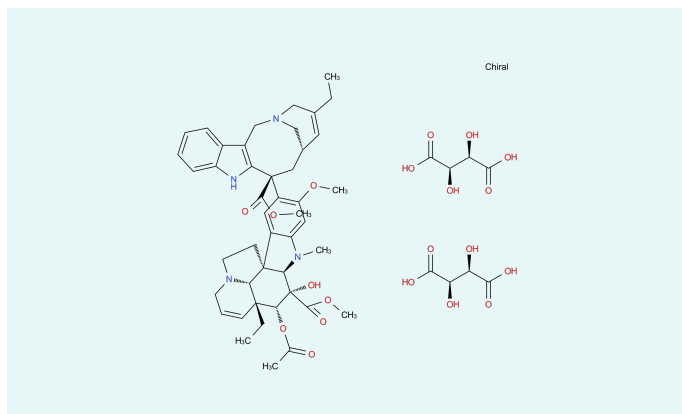


# Vinorelbine tartrate



## CAS

125317-39-7

## Status

Commercial

[Inquiry](#)

Vinorelbine tartrate is a semi-synthetic alkaloid derived from *Cataranthus roseus*, which acts cytostatically. It acts as a spindle inhibitor, which means that in one phase of cell division it prevents the chromosomes from spreading to both cell poles. It therefore has an antineoplastic effect. Despite the same quality of action, it leads to fewer side effects compared to other cytostatics. It is therefore used in the treatment of bronchial and mamma carcinomas.

## Description

**Formula**  $C_{53}H_{66}N_4O_{20}$

**Molecular weight** 1,079.11 g/mol

**Molecular size** small

**Controlled Substance** no

**Precursor** no

**Indications** Antineoplastic drugs

## Your Contact



**Marius Hang**  
*International Division*  
*Director API Export*

Midas Pharma GmbH  
Rheinstr. 49  
55218 Ingelheim  
Germany  
[Send E-Mail](#)

### Disclaimer

*The information contained herein is the proprietary information of Midas Pharma GmbH and its affiliates. This information is provided to you solely for your evaluation, to determine your interest in a potential business relationship with Midas Pharma GmbH and/or its affiliates. Midas Pharma GmbH excludes any express or implied representations, guarantees or warranties of whatsoever nature, including but not limited to the warranties for the completeness or accuracy of the information provided herein.*

*No information provided herein – including any reference to any product or service – constitutes an offer for sale, or shall be construed as representing an offer for sale. In particular, nothing herein should be construed as a promotion or advertisement for any product, or for the use of any product, that infringes valid patents and/or is not authorized by the laws and regulations of your country of residence.*