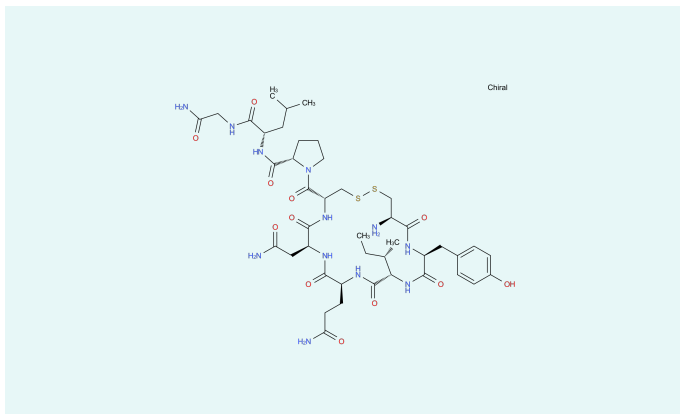


# Oxytocin



## CAS

50-56-6

## Status

Commercial

Inquiry

Oxytocin belongs to the group of cyclic peptid hormones. The active substance initiates contractions at birth and promotes milk secretion. It is used for the treatment of contraction weaknesses and to promote the flow of milk.

## Description

**Formula**  $C_{43}H_{66}N_{12}O_{12}S_2 \cdot C_2H_4O_2$

**Molecular weight** 1,067.24 g/mol

**Molecular size** small

**Controlled Substance** no

**Precursor** no

**Indications** Pituitary and hypothalamic hormones and analogues

## Your Contact



**Marius Hang**  
*International Division*  
*Director API Export*

Midas Pharma GmbH  
Rheinstr. 49  
55218 Ingelheim  
Germany  
[Send E-Mail](#)

### Disclaimer

*The information contained herein is the proprietary information of Midas Pharma GmbH and its affiliates. This information is provided to you solely for your evaluation, to determine your interest in a potential business relationship with Midas Pharma GmbH and/or its affiliates. Midas Pharma GmbH excludes any express or implied representations, guarantees or warranties of whatsoever nature, including but not limited to the warranties for the completeness or accuracy of the information provided herein.*

*No information provided herein – including any reference to any product or service – constitutes an offer for sale, or shall be construed as representing an offer for sale. In particular, nothing herein should be construed as a promotion or advertisement for any product, or for the use of any product, that infringes valid patents and/or is not authorized by the laws and regulations of your country of residence.*