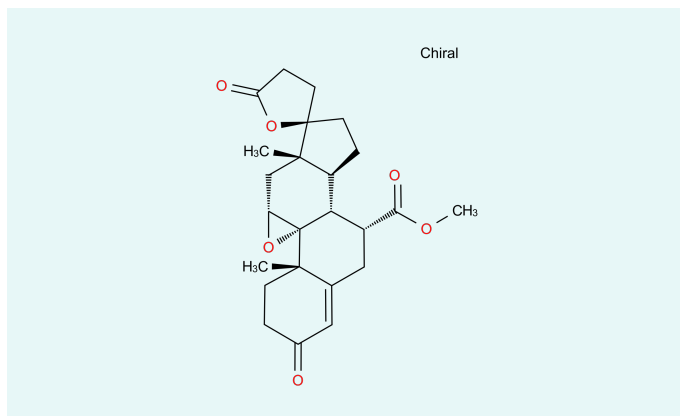


Eplerenone



CAS

107724-20-9

[Inquiry](#)

Eplerenone belongs to the group of steroids. The active substance is an aldosterone antagonist. It is used for the treatment of heart failure after a myocardial infarction.

Description

Formula $C_{24}H_{30}O_6$

Molecular weight 414.49 g/mol

Molecular size small

Controlled Substance no

Precursor no

Indications Diuretics

Your Contact



Marius Hang
International Division
Director API Export

Midas Pharma GmbH
Rheinstr. 49
55218 Ingelheim
Germany
[Send E-Mail](#)

Disclaimer

The information contained herein is the proprietary information of Midas Pharma GmbH and its affiliates. This information is provided to you solely for your evaluation, to determine your interest in a potential business relationship with Midas Pharma GmbH and/or its affiliates. Midas Pharma GmbH excludes any express or implied representations, guarantees or warranties of whatsoever nature, including but not limited to the warranties for the completeness or accuracy of the information provided herein.

No information provided herein – including any reference to any product or service – constitutes an offer for sale, or shall be construed as representing an offer for sale. In particular, nothing herein should be construed as a promotion or advertisement for any product, or for the use of any product, that infringes valid patents and/or is not authorized by the laws and regulations of your country of residence.