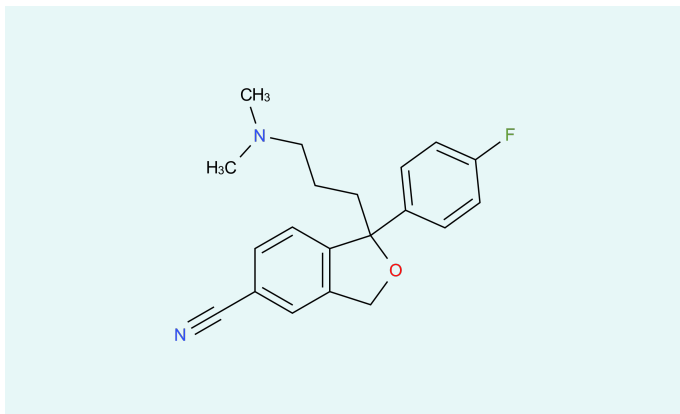


Citalopram



CAS

59729-33-8

[Inquiry](#)

Citalopram belongs to the group of selective serotonin reuptake inhibitors (SSRIs). The active ingredient prevents the re-uptake of neurotransmitters and prolongs their time of action. It is used for the treatment of depression and post-traumatic stress disorder (PTSD).

Description

Formula	C ₂₀ H ₂₁ FN ₂ O
Molecular weight	324.39 g/mol
Molecular size	small
Controlled Substance	no
Precursor	no
Indications	Psychoanaleptics

Your Contact



Marius Hang
International Division
Director API Export

Midas Pharma GmbH
Rheinstr. 49
55218 Ingelheim
Germany
[Send E-Mail](#)

Disclaimer

The information contained herein is the proprietary information of Midas Pharma GmbH and its affiliates. This information is provided to you solely for your evaluation, to determine your interest in a potential business relationship with Midas Pharma GmbH and/or its affiliates. Midas Pharma GmbH excludes any express or implied representations, guarantees or warranties of whatsoever nature, including but not limited to the warranties for the completeness or accuracy of the information provided herein.

No information provided herein – including any reference to any product or service – constitutes an offer for sale, or shall be construed as representing an offer for sale. In particular, nothing herein should be construed as a promotion or advertisement for any product, or for the use of any product, that infringes valid patents and/or is not authorized by the laws and regulations of your country of residence.