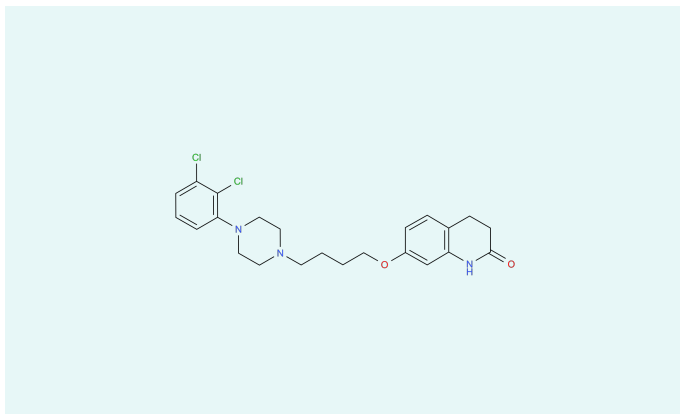


# Aripiprazole



## CAS

129722-12-9, 851220-85-4

## Status

Commercial

[Inquiry](#)

Aripiprazole is a quinolin derivative that belongs to atypical neuroleptics. The active ingredient binds selectively to the dopamine D2 and 5-HT(1A & 2A) receptor (as a partial agonist), as well as on the Gβγ-pathway (as an agonist). Partial agonism is atypical for neuroleptics and is therefore referred to as a new generation. Aripiprazole is used in schizophrenia, bipolar-I-disorders and manic episodes.

## Description

**Formula**  $C_{23}H_{27}Cl_2N_3O_2$

**Molecular weight** 448.39 g/mol

**Molecular size** small

**Controlled Substance** no

**Precursor** no

**Indications** Psycholeptics

## Your Contact



**Marius Hang**  
*International Division*  
*Director API Export*

Midas Pharma GmbH  
Rheinstr. 49  
55218 Ingelheim  
Germany  
[Send E-Mail](#)

### Disclaimer

*The information contained herein is the proprietary information of Midas Pharma GmbH and its affiliates. This information is provided to you solely for your evaluation, to determine your interest in a potential business relationship with Midas Pharma GmbH and/or its affiliates. Midas Pharma GmbH excludes any express or implied representations, guarantees or warranties of whatsoever nature, including but not limited to the warranties for the completeness or accuracy of the information provided herein.*

*No information provided herein – including any reference to any product or service – constitutes an offer for sale, or shall be construed as representing an offer for sale. In particular, nothing herein should be construed as a promotion or advertisement for any product, or for the use of any product, that infringes valid patents and/or is not authorized by the laws and regulations of your country of residence.*